

HERO FIREFIGHTER QUIZ #2

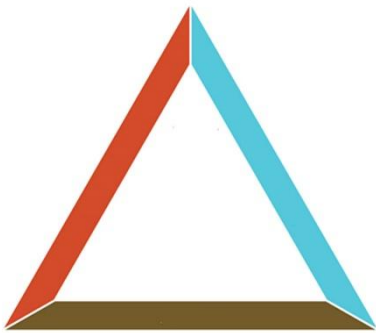
Q1: Name the three types of bushfires:

S _____ **Surface**
G _____ **Ground**
C _____ **Crown**

Q2: Name the 3 common types of hoses used:

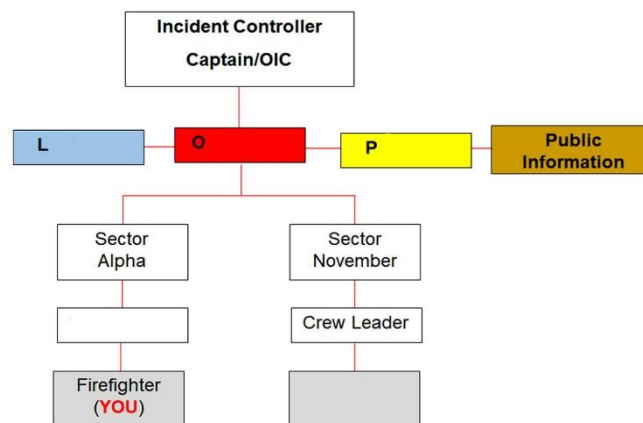
• **Lay Flat, Suction and Hose Reels**

Q3: Name the sides of the fire triangle below:



• **Oxygen, Fuel and Heat**

Q4: Complete the following Incident Control structure:



Logistics, Operations, Planning, Crew Leader (or Sector Commander), Firefighter

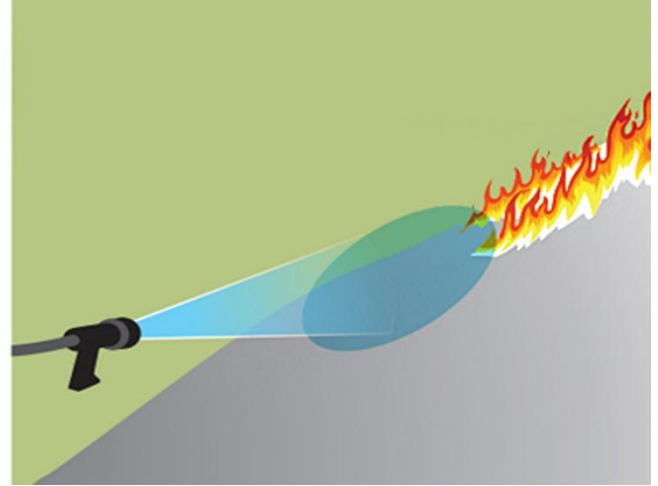
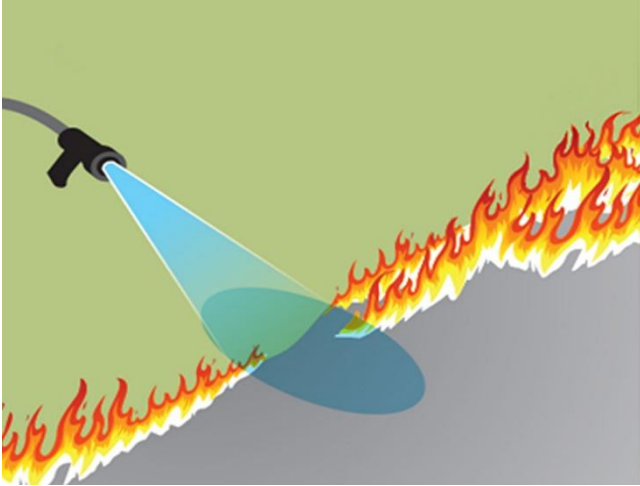
Q5: Is the Emergency Service Directory (ESD) a book of topographic maps, or cadastral maps?

• **Both! Topographic shows 'roads, rivers, railways' etc., and cadastral maps show property boundaries which often equates to fence lines**

Q6: Bushfire fighters are sometimes called to vehicle fires to assist FRS/VFRS. Name at least 3 explosion hazards you may face.

Answers may include damper struts on bonnets, hatchbacks etc., tail shafts, tyres, gas shock absorbers, air conditioning units, LPG fuel tanks, petroleum fuel tanks.

Q7: Which is more water efficient, spraying across the fire edge, or along the fire edge?



- **Along the fire edge. If possible, have a second spray along the edge to black out and prevent flare-ups**

Q8: When can you refill the fuel tank on your Light Tanker's pump while on the fireground?

Never! You must always do this in a safe location away from the incident fire and potential ignition sources (such as at water filling points and at the staging areas).

Q9: While we're on that subject, what colour are (a) unleaded fuel jerry cans, and (b) diesel jerry cans?

Unleaded will be in RED jerry cans (or with red labels), while diesel is in yellow jerry cans (or yellow labels).

Q10: What does WAERN stand for?

- **Western Australian Emergency Radio Network**